



**COMPETITION AND TECHNICAL RULES APPLICABLE TO IN-COMPETITION  
WARNINGS AND/OR DISQUALIFICATIONS (L, YC, YRC, RC, DQ)  
(2022 Edition)**

CR18.5 - unsporting manner / improper conduct\*

TR5.11 - not complying with the clothing / shoes / bib rules

TR6.3.1 - pacing

TR6.3.2 - use of electronic device

TR6.3.3 - use of technology or appliance

TR6.3.4 - use of mechanical aid

TR6.3.5 - provision of advice or other support by an official of the competition

TR6.3.6 - receiving physical support from another athlete

TR16.5.1 - aborting the start without valid reason

TR16.5.2 - delaying the start

TR16.5.3 - disturbing the start

TR16.8 - false start

TR17.2.2 - jostling / obstruction

TR17.3.1 - lane infringement

TR17.3.2 - infringement of the inside border

TR17.4 - lane infringement resulting in material advantage

TR17.4.3-4 - 2<sup>nd</sup> lane infringement

TR17.5 - leaving the assigned lane / track before the breakline / breakpoint

TR17.6 - continuing in the race after voluntarily leaving the track

TR22.6 - not going over each hurdle

TR22.6.1 - trailing leg below the horizontal plane of top of hurdle

TR22.6.2 - knocking down / displacing a hurdle in an illegal way

TR22.6.3 - knocking down / displacing a hurdle in another lane

TR23.7 - not going over each hurdle / the water jump

TR23.7.1 - stepping beside the water jump

TR23.7.2 - trailing leg below the horizontal plane of the top of hurdle

TR24.5 - running without the baton / finishing the race without the baton

TR24.5 - fault at carrying the baton (e.g., using gloves or substances on hand)

TR24.6 - fault at recovering a dropped baton

TR24.7 - passing the baton outside the takeover zone (early / late takeover)

TR24.8 - infringement of TR17.3. / impediment at takeover

TR24.9 - taking the baton from another team

TR24.10 - running more than one leg / using more than allowed substitutes

TR24.11 - late confirmation / changing team composition and/or running order

TR24.13/14/15/16.1 - leaving the assigned lane before the breakline

TR24.19 - starting outside the takeover zone

TR24.20 - exchanging positions before takeover  
TR24.21 - jostling / obstruction at takeover

TR39.8.3 - false start (Combined Events)

TR44.6 - leaving the assigned lane before the breakline (Indoor)  
TR48.4 - exchanging positions before takeover (Indoor)

TR54.7.1 - repeated failure to comply with the definition of Race Walking  
TR54.7.3 - failing to enter the Penalty Zone / leaving the Penalty Zone early  
TR54.7.5 - fourth red card (when Penalty Zone used)  
TR54.10.8 - taking refreshment outside of official station / of another athlete  
TR54.13 - shortening the distance to be covered (Race Walk)

TR55.8.8 - taking refreshment outside of official station / of another athlete  
TR55.10 - shortening the distance to be covered (Road Running)

TR56.9 - shortening the distance to be covered (Cross-Country)

TR57.8.1 - shortening the distance to be covered (Mountain / Trail Running)  
TR57.8.2 - receiving assistance / refreshment outside of official station  
TR57.8.3 - not complying with a specific race regulation

---

*Notes:*

*- items separated by slash will be chosen as appropriate*

*\* if applicable, the infringed Technical Rule to be indicated in a foot note*

## **OTHER INFRINGEMENTS**

\*\*TR4.4.1 - no show of confirmed athlete  
\*\*TR4.4.2 - no show of qualified athlete  
\*\*TR4.4.3 - competing without bona fide effort

\*\*TR7.2 - prevented from participation from further events [due to CR18.5, incl. TR16.5]  
\*\*TR7.3 - prevented from participation from further events [due to CR18.5]

---

*\*\*for foot note reference only and not to be included in the Results section*

## Rules TR 17.4.2 / TR 17.4.3

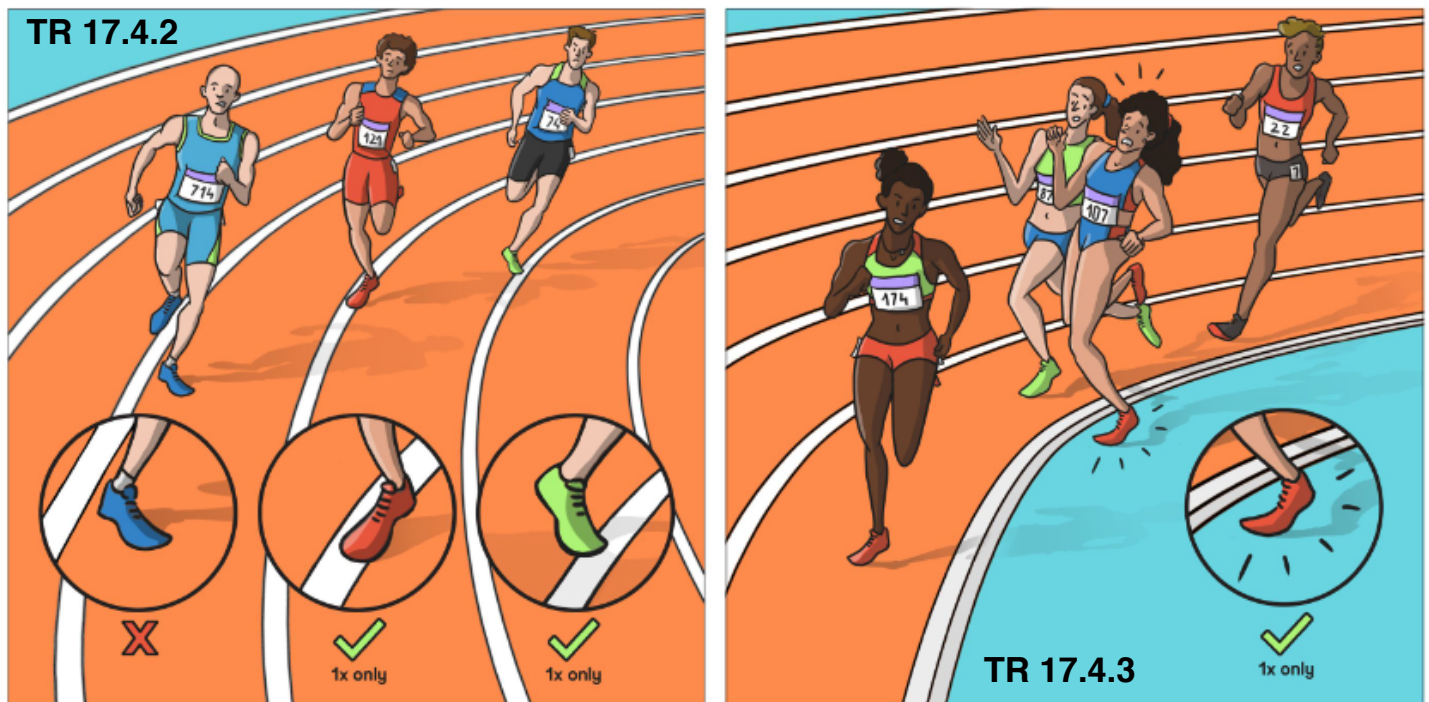
The easing of the rules regarding lane infringements are among the competition rule (CR) and technical rule (TR) changes approved by the World Athletics Council which come into force from today (1 November 2021).

These were agreed in March and July 2021 and are available for download in the Book of Rules. Area and Member Federations are notified of all rule changes directly after the Council meeting at which the decision is made.

Lane infringement rule changes had been on the agenda of the World Athletics Technical Committee since January 2018. At that year's World Athletics Indoor Championships in Birmingham in the March, there were 21 disqualifications relating to lane violations, including four in two races, and since then there has been a heightened debate about these rules.

Rather like race walk transgressions, some one-off lane infringements are now permitted, but shall result in disqualification if they are repeated by the same athlete or within the same relay team at any time during the rounds of the same event.

Two further exceptions have been added to the list of scenarios (under TR 17.4) where a lane infringement shall not lead to immediate disqualification. These are: **17.4.2** – while racing in lanes and the inner lane line, the border or kerb is touched once on a bend; and **17.4.3** – while racing not in lanes and one step is taken on or completely over the inner border line or kerb.



A second occurrence of the act described in these new clauses, in the same event by an individual or any team member, shall result in disqualification. A record of such transgressions shall therefore be carried forward to later rounds of that event and indicated on start lists and results, in a similar fashion to the separate yellow card notices for breaches of discipline.

Athletes racing in lanes shall continue to be disqualified if they are judged to have fully stepped inside the inner border line or kerb, even only once. Or if either of the acts described in 17.4.2 or 17.4.3 are judged to bring positional advantage or impede another athlete.