



FieldLynx

Quick Start Guide

Introduction

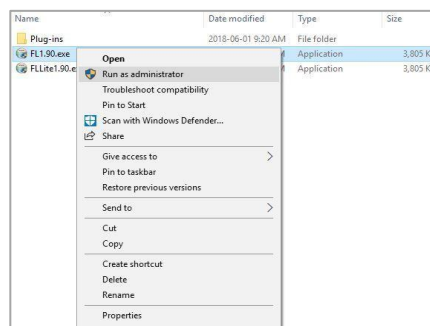
The following guide will walk you through the use of FieldLynx program followed by event specific setup for Throws, Horizontal Jumps, and Vertical Jumps. Page 7 is the start of the setup and use of the Electronic Distance Measuring device, (EDM) or what some refer to as EDM/LaserLynx.

To BCA Officials:

For training purposes you'll be able to install FieldLynx on your home computers/tablets. FieldLynx comes with 3 events that you can setup, check in athletes and record marks. You can even create your own events if you want.

Step 1 Installation

- FieldLynx must be installed on a "Windows" based device, usually a laptop or desktop. Most tablets and phones are android based. Apple products do not work.
- Click on the link below from your Windows based device to install FieldLynx. (Must be connected to the internet.)
<https://www.finishlynx.com/download/software-downloads/fieldlynx/FL1.90.exe>
- Right-click on the installer and click **Run as Administrator**.
- Follow the prompts to complete the install.



General FieldLynx Instructions

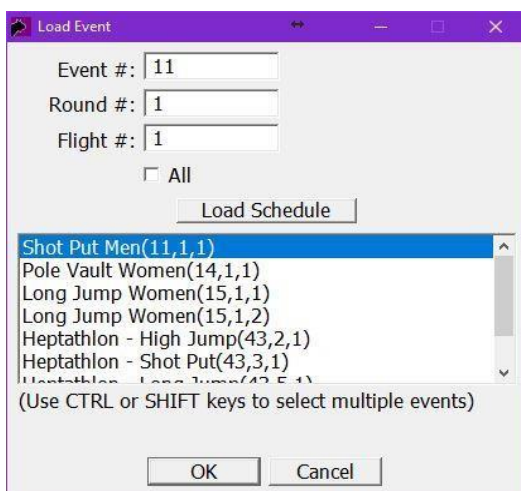
(Applies to all events)

Step 1 Load an Event by Clicking

This part is usually done at the Competition Secretary's desk or within Wi-Fi range.


Note: For training purposes use the events that came with the download.

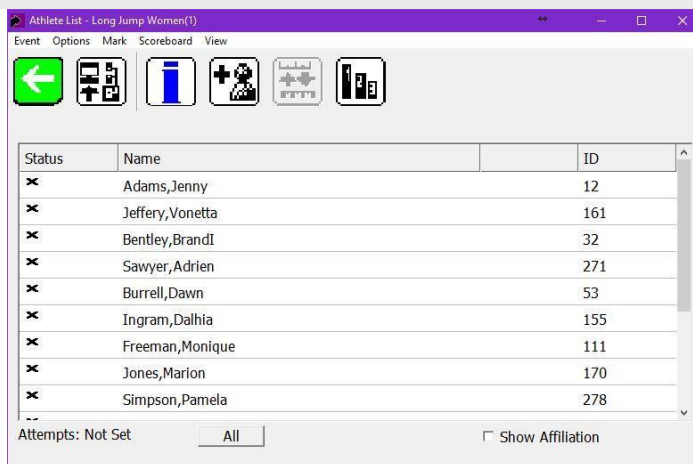
- At a meet, click **Load Schedule** and select the desired event.
- Alternatively, you can enter the Event-Round-Heat number of the desired event.






Step 2 Select Event

- a. Select the desired event by clicking the event name, round, and flight from the Main Window.
 - i. A new window will open with the Athlete List.
- b. Click the Event Setup icon 
 - i. Please refer to Page 5 of the QSG for event-specific setup instructions.






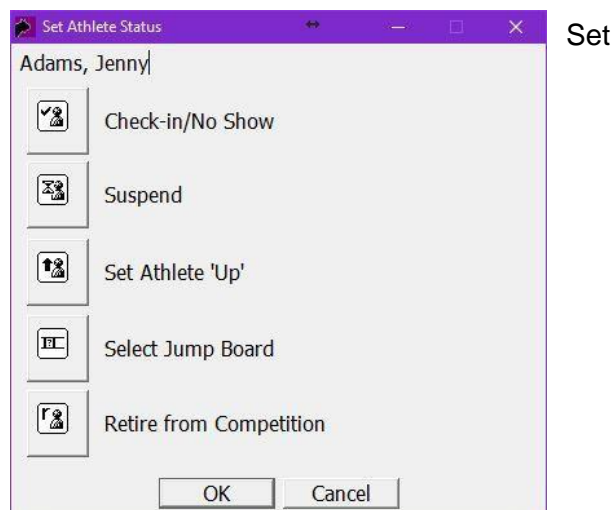
Status	Name	ID
x	Adams, Jenny	12
x	Jeffery, Vonetta	161
x	Bentley, Brandi	32
x	Sawyer, Adrien	271
x	Burrell, Dawn	53
x	Ingram, Dalhia	155
x	Freeman, Monique	111
x	Jones, Marion	170
x	Simpson, Pamela	278

Step 3 Check-in Competitors

- a. Check competitors in by tapping the  icon. the athlete to **Check-in**, **Suspend**, or **Set Athlete 'Up'**.
 - i For horizontal jumps, also set the **jump board**.
 - ii For vertical jumps, also set the **opening height**.
 - iii For pole vault, also set the **depth**.

You will see the following indicators next to the athlete name:

- ii. Athlete is **Up** 
- iii. Athlete is **Next** 
- iv. Athlete is **Waiting** 



Retired From Competition Status

The *Retired from competition* status is now supported when the IAAF, NCAA or USATF rulebook is selected.

To set the status of an athlete to *Retired from competition* (r):

1. Go to the *Athlete List* for the event's flight.
2. Tap on the **Status** column for the athlete to be retired.
3. Tap the **Retire from Competition** icon.




Check-In Entire Flight

The option to check-in the entire flight is also available from the menu bar of the Athlete List, in addition to the main screen.

To check-in an entire flight from the Athlete List:

1. Expand the *Event*, *Round* and *Flight* from the main screen.
2. Go to **Options | Check-In Entire Flight...**
3. Click **All** (button). Load Selected Flights

FieldLynx allows the user to select multiple events or flights from a competition schedule and load them to the main screen. To select and load multiple flights at the same time:


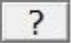
1. Click the *Load event from database* icon, .
2. Click **Load Schedule**.
3. Select a flight.
4. Press & hold the **CTRL** key.
5. Select additional flights.
6. Click **Ok**.

Edit Earlier Mark


When a foul has been entered for an athlete's earlier attempt in horizontal events, it is now possible to change the foul to a valid mark without deleting all data since the foul was entered in the Athlete's screen. This may be useful if a protested attempt is later considered as valid.

EDM/LaserLynx Help: EDM/LaserLynx setup diagrams are now available from the event setup screen.

»To view the EDM/LaserLynx setup diagrams:

1. Go to the *Athlete List* for the event's flight.
2. Tap the event setup icon .
3. Tap the  icon in the *Setup EDM/LaserLynx* section (top right).

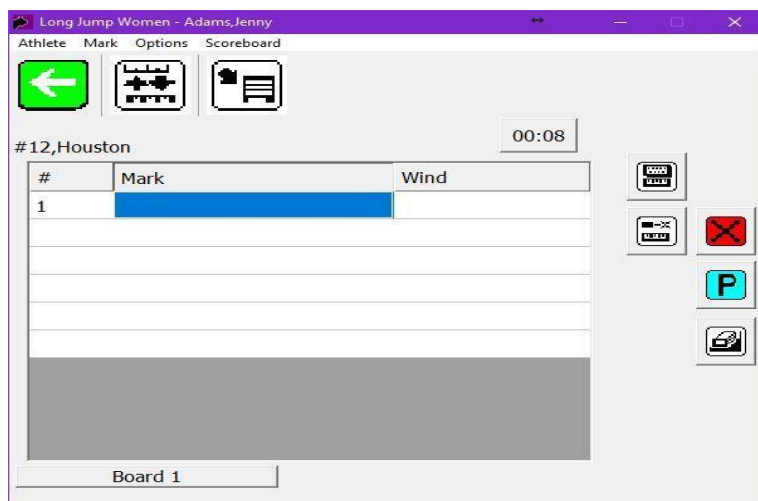
Step 4 Add a Competitor (Optional)

- a. Click .
- b. Add the athlete information. (Make sure the Competition Secretary is aware an athlete has been added.)



Step 5 Entering Athlete Marks

a. Tap on the competitor up next. The mark entry screen appears:



b. Record the competitor's mark.

	Tap and enter the values using the popup keyboard. (does not apply to vertical jumps)		Clears height (vertical jumps)
	Then, click.		
	To return to the flight sheet after entering a mark. Repeat for all competitors.		Foul
	To erase the mark and enter a new one.		Pass

c. Once results are complete click **Event / Send Results** or click:



d. Other icons (additional plug-ins may be required)

	Display the current standings		Obtain a measurement from a laser
	Convert from English to metric or metric to English		Obtain a wind reading
	Send mark or standings to the scoreboard		

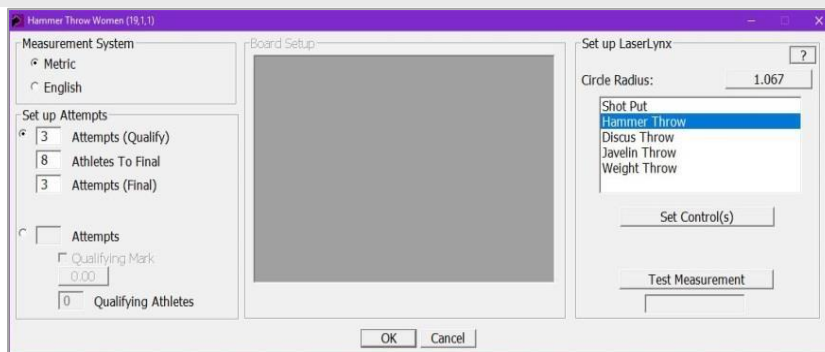


Event-Specific Information

Setting up the events will differ slightly depending on the type on event.
See the specific event setups below.

Event 1 Throws

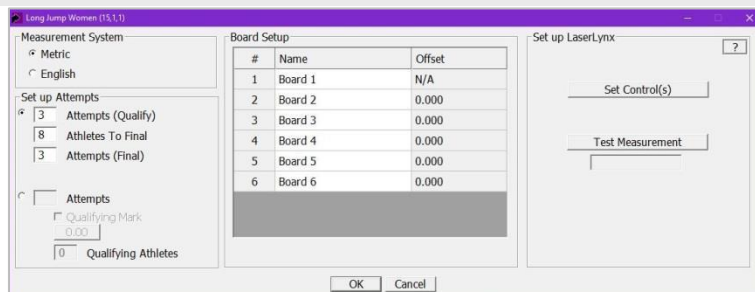
- Choose **Metric** or **English**.
- Set up the attempts as shown for events with finals.
- For a 3 or 6 round competition select the “Attempts” button and input # of attempts
- Click **Ok**
- If EDM/LaserLynx is used, see EDM/LaserLynx QSG below for details.



- To manually enter mark, select keypad symbol at the right of the screen as shown in **Step 5**
- To progress to final rounds, return to setup (**BLUE I**) at the end of Round 3.
 - Screen will display question “do you want to create a final from this flight? Answer **OK**
 - Select “**Prelim**” on next screen. Round 4 (new order) will be shown
 - Screen will show question at the end of round 4 “do you want to reorder the competition list based on current round of performance?” Answer **NO**, unless you want to reorder again. The same question will appear at the end of Round 5

Event 2 Horizontal Jumps

- Choose **Metric** or **English**.
- Set up the attempts as shown for events with finals.
- For a 3 or 6 round competition select the “Attempts” button and input # of attempts
- If EDM/LaserLynx is used, see EDM/LaserLynx QSG below for details.



Note: You can set an athlete’s board when checking in each individual athlete, e.g. for Triple Jump

- To manually enter mark, select keypad symbol at the right of the screen as shown in **Step 5**
- To enter wind reading, click on empty wind reading space
 - Select keypad symbol
 - Select wind direction (+/-)
 - Enter two decimal places, e.g. +1.20 will show as +1.2. Zero wind must be entered as +0.00. NWI will be left as -0.00
- To progress to final rounds, return to setup (**BLUE I**) at the end of Round 3.
 - Screen will display question “do you want to create a final from this flight? Answer **OK**
 - Select “**Prelim**” on next screen. Round 4 (new order) will be shown
 - Screen will show question at the end of round 4 “do you want to reorder the competition list based on current round of performance?” Answer **NO**, unless you want to reorder again. The same question will appear at the end of Round 5



Event 3 Vertical Jumps

- Choose **Metric** or **English**.
- Set the **Alive Groups**. Usually “**All**”
- Enter the starting height, end height, and intervals. Click **Apply**.
-

Notes:

- Individual athlete starting heights can be entered when checking in the athletes.
- End height** should be set very high (highest probable level in this competition. Having extra heights will allow you to edit heights at the end).
- Alive groups** usually left at **all** (not normally used in Canada)
- Bar heights can be edited by clicking **View** at the height where the change takes place.

High Jump Women (13,1,1)

Measurement System

Metric

English

Alive Groups:

3

4

5

All

Stop alive groups when remaining athletes <= 9.

Bar Heights

Start: 1.42

End: 2.00

Interval: 0.05

Apply View

Qualifying Mark

0.00

Qualifying Athletes

OK Cancel

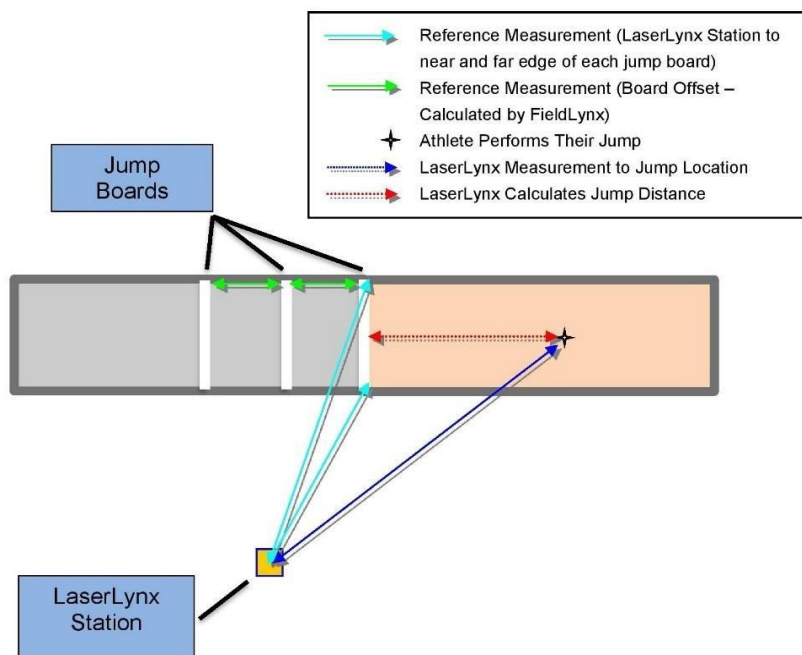
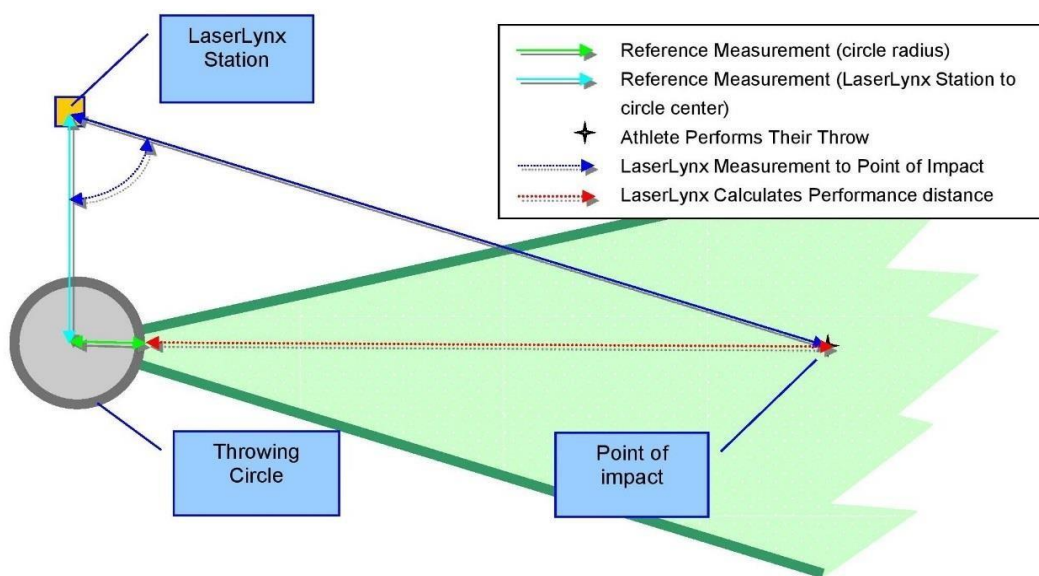


EDM/LaserLynx Setup & Operations

Step 1 Choose EDM/LaserLynx Station Location

When choosing the location for the EDM/LaserLynx station, consider the following:

- The EDM/LaserLynx station should have a clear line of sight to the center of the throwing circle or jump boards. Figure out where the poles for the cage are and set it up accordingly. If you're under a tent make sure the tent legs are out of the way. The EDM/LaserLynx will see through the cage fine.
- The EDM/LaserLynx station should have a clear line of sight of the landing sector or pit. Again, make sure the tent legs are out of the way.
- The EDM/LaserLynx station should be in a safe location, clear of potential landing area of all implements.
- The EDM/LaserLynx station should be near (<3m) the FieldLynx computer, but out of the way of officials.





Step 2 Set up the tripod

- Open the legs of the tripod equal width apart. Set the legs of the tripod so you don't have to have a tripod leg between your legs when you're taking measurements in the sector.
- Flip the levers on the tripod legs and extend them so that the top of the tripod is at about chest height. If you're going to have multiple people using the EDM, use the shortest person.
- If you are on grass, push the legs of the tripod into the ground by stepping on the foot rests at the base of the tripod.
- Step back and look at the tripod. Then, adjust the legs so that the tripod tabletop appears as level as possible.

TIP: Use a standard level on the tripod tabletop to check that it is level. There is a small level in the case but that may get lost.

Step 3 Setting up and Connecting the EDM unit

- Slide the sighting unit around on the tripod tabletop until the threaded hole lines up with the securing screw and the handle beneath the tripod tabletop.
- Turn the handle to secure the sighting unit to the tripod tabletop.



- Preliminary Site with triangle
- Distance focus adjustment
- Crosshair focus adjustment
- Telescopic Eyepiece
- Tilt fine adjustment knob
- Tilt lock & release knob
- Fine level adjustment bubble
- On/Off button
- Rotation fine adjustment knob
- Rotation lock & release knob
- Round level
- Precision level adjusters

Note: Data out port not shown



Step 4 Level the tripod

- Turn the sighting unit on the tripod tabletop until the laser aperture facing the throwing circle or the take-off board. The laser aperture is located on the opposite side of the laser from the eyepiece.
- Turn the precision level adjusters until the bubble is centered in the middle of the “Round Level.”
- Locate the “Fine Level Adjustable Bubble” on the sighting unit. Continue to move the precision level adjusters until the bubble in this level is also centered. (This is a VERY fine adjustment.)

NOTE: When you turn the sighting unit around the landing sector, the bubbles in the levels should remain centered.

Step 5 Connect the laser to the computer and start the EDM

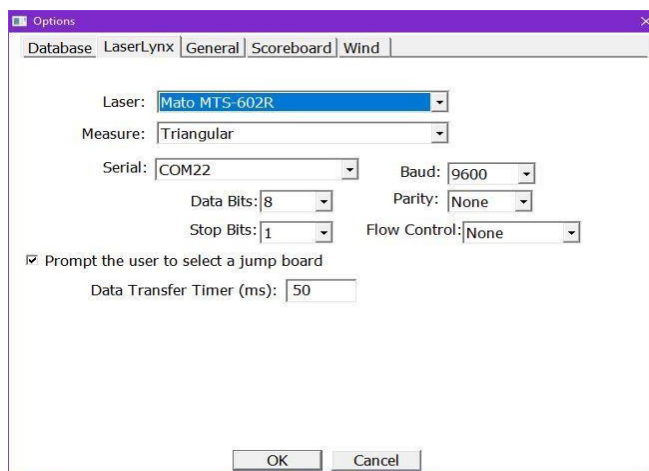
- Connect the serial cable to the sighting unit. Remove the black rubber stopper from the port below the laser aperture and connect the cable to the port.
- Connect the serial cable to the FieldLynx computer’s USB-Serial on the right side of the laptop.
- Turn on the laptop
- Put the battery into the EDM. Little holes go to the bottom.
- Push the “On” button to turn it on. Do not push anymore buttons on the EDM, this will take you to different menus.
- Take the lens cap off the EDM.

Note: To turn off the EDM you need to push the button under the little light and the “On” button at the same time.

Step 6 Configure the EDM/LaserLynx Options in FieldLynx

NOTE: The only part of this you should need to do is to make sure you have the right Serial Port.

- Open the FieldLynx Program and navigate to **Options / Preferences**.
- Click the **LaserLynx** tab.
 - Make sure in the **Laser** drop-down menu, “Sokkia SET5x” is the model being used
 - Click the **Serial:** drop-down and select the **COM#** of the USB-Serial adapter used for communication between the FieldLynx program and the laser. It should be Com 3 or 4.
 - Check that the serial protocol parameters match the laser configuration. The Sokkia SET 5x default is **9600-8-None-1** and Flow Control to **None**.
 - Click **Ok**.




NOTE: IF you have changed a setting, close and restart FieldLynx to initialize the EDM/LaserLynx setup.



Step 6 Set up the Prismatic Reflector Target Pole

- a. Screw the prismatic reflector into the target pole, turning until secure. The target pole should have the prismatic reflector close to the ground.
- b. Take the lens cap off.

NOTE: At this point, go to **Step 9** and open up the event and then click the “Event Setup Icon.”  Once it is open and you’ve checked you have the proper radius selected, come back to the steps below.

If you are measuring a throwing event:

- a. Ask someone acting as a marker to set the target pole in the center of the throwing circle. You’ll need to measure most circles to find the center and many are not exactly round! Measure from the front of the circle in the middle sector lines using the radius of the circle, place a mark. Then measure from the radius from each side and split the difference. This should be close to the center of the circle.
- b. Have the marker place the pole on the center mark and face the prismatic reflector toward the EDM unit while holding the target pole level using the leveling bubble on the pole.

If you are measuring a horizontal jumping event:

- a. Ask someone acting as a marker to set the target pole on the Near corner of the take-off board. This is the corner that is closest to the EDM on the edge of the take-off board closest to the pit.
- b. Have the marker face the prismatic reflector toward the EDM unit while holding the target pole level using the leveling bubble on the pole.

Step 7 Use the Primary Site on the EDM to find the prismatic reflector

- a. Turn the Rotation and Tilt Lock Release Knobs counter-clockwise so that the sighting unit moves freely on its base.
- b. Turn the EDM till it’s generally pointed at the reflector pole. Look through the Preliminary Site on top or bottom of the sighting unit and rotate the sighting unit until you can see the target pole while looking through the site. You should see a white triangle, set it as close as possible to the prismatic reflector on the bottom of the target pole. Once the prismatic reflector on the target pole is in view, turn the Rotation and Tilt Lock Release Knobs clockwise to lock it.


Step 8 Focus on the prismatic reflector

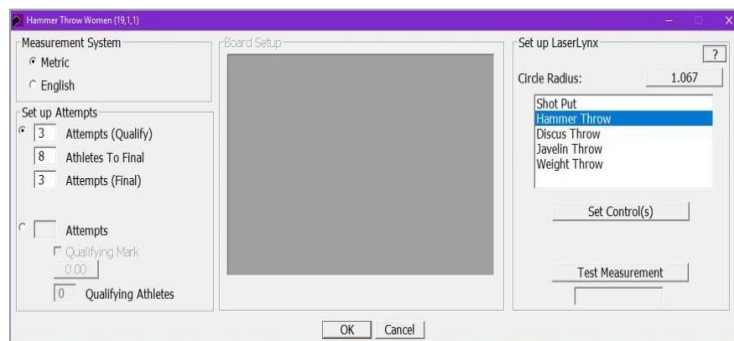
- a. Now that you have the prismatic reflector in view, look through the telescopic eyepiece on the sighting unit.
- b. Notice that the eyepiece has two adjustment rings. Turn the smaller adjustment ring until you see the crosshairs clearly when looking through the lens.
- c. Turn the larger adjustment ring on the eyepiece to focus on the prism until the image is crisp.
- d. Turn the Rotation & Tilt Fine Adjustment Knobs until the crosshairs are centered on the prismatic reflector when looking through the lens.
- e. You’re now ready to take a measurement.



Step 9 Set the control measurement by using the FieldLynx Program

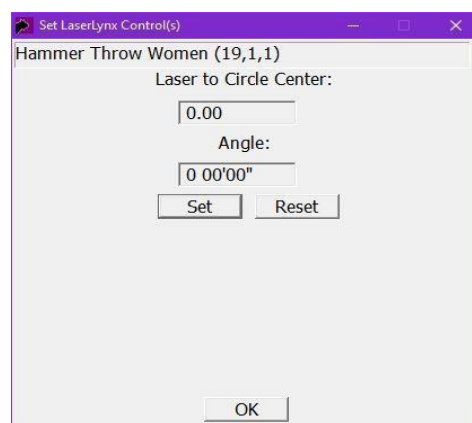
FieldLynx Program

- You can do this first part before you site the EDM on the center of the circle.
- Select the desired event by clicking the event name, round and flight from the Main Window. A new window will open with the Athlete List.
- Click the Event Setup icon .
- If you haven't set the "Attempts, do it now. If there is not going to be finals, put in the number of attempts.



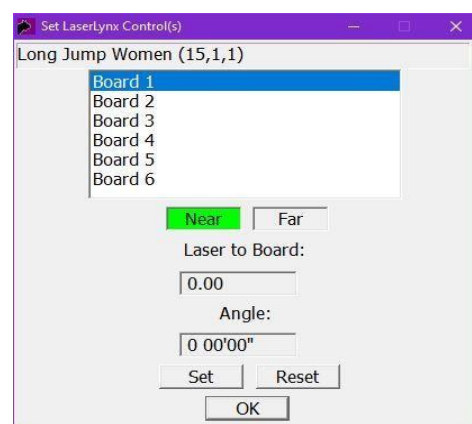
For Throwing Events

- Confirm the **Circle Radius** and selected event are correct.
- (optional) Click the circle radius box to edit if needed. This may be a way to offset the measurement is the steel tape does not agree with the EDM.
- Click the **Set Control(s)** button.
- Site and focus on the prismatic reflector at the center of the circle.
- Click **Set**. The EDM will start clicking.
- Wait for the "**Laser to Circle Center:**" to be calculated.
- Numbers other than "0.00" should show. Click **Ok**.



For Horizontal Jumping Events

- Click the **Set Control(s)** button.
- Click **Set** to measure the **Near** corner of **Board 1**.
- Wait for the **Laser to Board:** to be calculated.
- Ask the marker to move the target pole to the **Far** corner of **Board 1**
- Site and focus on the prismatic reflector.
- Click the **Far** button to highlight it green.
- Click **Set** to measure the **Far** corner of **Board 1**.
- Wait for the **Laser to Board:** to be calculated.
- Numbers other than "0" should show. Click **Ok**.





NOTE: If multiple jump boards are used, select the next **Board** used (Board 2), ask the marker to move the target pole anywhere on the edge of the board closest to the pit and click **Set**. Repeat for all boards in use (max = 6).



Step 10 Record a Test measurement

- a. With the “Event Setup” page still open, ask the marker to move the target pole to a known position in the middle of the landing sector with a known distance (measured with a steel tape).
- b. Site and focus on the prismatic reflector.
- c. Click the **Test Measurement** button. The distance will come up in the box under the button.
- d. Validate that the calculated distance matches the distance measured with a steel tape.
- e. Place a mark outside the landing sector so you can verify quickly that the EDM is still measuring correctly. A board staked down with a hole in it would work.
- f. Click **Ok**.
- g. IF the reading is not correct you may have to move the center of the circle back or forward the desired amount as per **Step 6** then start **Step 10** over again until the EDM is the same as the steel tape. Or you can change the radius of the circle by clicking “**Circle Radius.**”
- h. Continue with **Event Setup** as per the FieldLynx QSG by making sure the number of attempts are correct and checking in athletes.

Step 11 Record Event measurements

- a. In the FieldLynx program, select the competitor throwing or jumping.
- b. After the competitor throws or jumps, the marker will move the target pole to the mark. The marker should then aim the prismatic reflector at the EDM and then hold the pole so the bubble in the level is centered.
- c. As the mark is being found, you can move the EDM into a rough position based on where you saw the implement/jumper land. Turn the Rotation and Tilt Lock Release Knobs counter-clockwise so that the sighting unit moves freely on its base.
- d. Turn the EDM till it's generally pointed at the reflector pole. Look through the Preliminary Site on top or bottom of the sighting unit and rotate the sighting unit until you can see the target pole while looking through the site. You should see a white triangle, set it as close as possible to the prismatic reflector on the bottom of the target pole. Once the prismatic reflector on the target pole is in view, turn the Rotation and Tilt Lock Release Knobs clockwise to lock it.
- e. Now that you have the prismatic reflector in view, look through the telescopic eyepiece on the sighting unit.
- f. Notice that the eyepiece has two adjustment rings. Turn the smaller adjustment ring until you see the crosshairs clearly when looking through the lens.
- g. Turn the larger adjustment ring on the eyepiece to focus on the prism until the image is crisp.
- h. Turn the Rotation & Tilt Fine Adjustment Knobs until the crosshairs are centered on the prismatic reflector when looking through the lens.
- i. Once the EDM is focused and centered you're ready to take a reading. In the FieldLynx program Click . The EDM will make some clicking noises as it sends the reading.
- j. Wait for the distance measurement to appear in the blue box. This is the distance of the competitor's throw or jump for that attempt.
- k. Click  to return to the athlete list.
- l. Unlock the tilt and rotation locks so you're ready for the next attempt.
- m. Return to “A” and repeat all steps for all attempts.

NOTE: This part is for the main meet computers that the Competition Secretary uses. VERY few Field Officials will need to use this part.

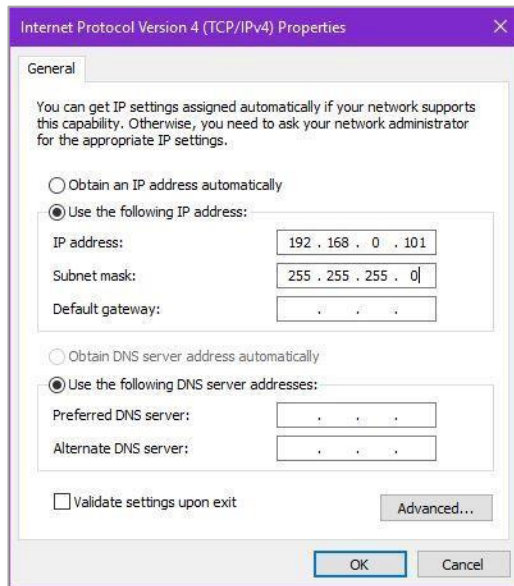
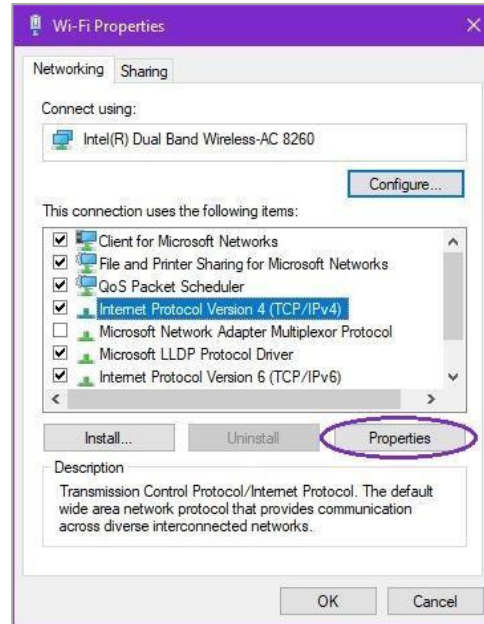
Step 2 Configure the Computer/Tablet Network Settings

- From the Windows start menu search for the **Network and Sharing Center**.
- Click **Change Adapter settings**.
- Right-click on the Wi-Fi connection; select **Properties**.
- Select **Internet Protocol Version 4 (TCP/IPv4)** then **Properties**.

- Select **Use the Following IP address:** and enter the desired IP address of the computer.

Note: FieldLynx tablets will typically be assigned as 192.168.0.100 and up.

- Enter the subnet mask of **255.255.255.0**
- Click **OK** and close the windows.
- Connect to the access point from the list of available Wi-Fi connections.





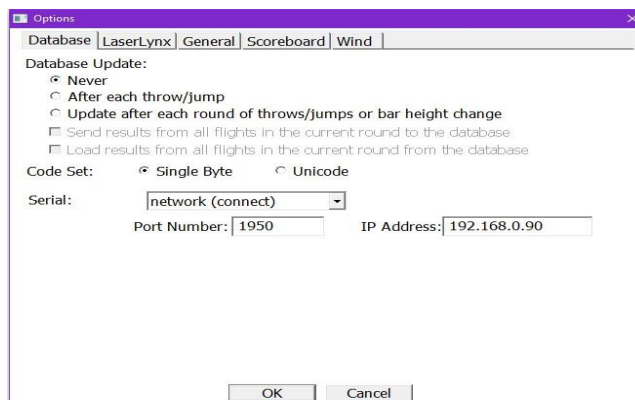
Integrated Communication Dialog

The *Communication* dialog for *Database*, *EDM/LaserLynx*, *Scoreboard* and *Wind* is now integrated into the relevant tab of the main *Options* dialog, reducing the number of screens required to configure FieldLynx.

Database Options

EDM/LaserLynx Options

Scoreboard Options

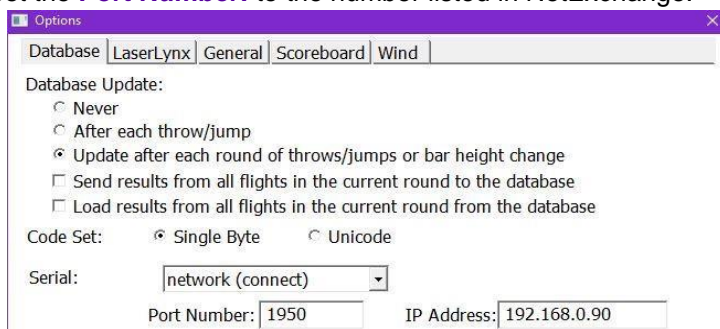


Step 3 Disable the Windows Firewall

- Search for the **Control Panel** from the windows start menu.
 - Find **Windows Firewall**.
 - Select **Turn Windows Firewall on or off**.
 - Turn off the firewall for each connection type.
- Notes:**
- The firewall may be controlled by antivirus software which would need to be removed before turning the firewall off.
 - Alternatively, you can allow the FieldLynx program through the firewall.

Step 4 Configure the Database Options

- Open the FieldLynx Program and navigate to **Options / Preferences**.
- Click the **Database** tab.
 - Select how often to update the database.
 - Set the **IP Address**: of the NetExchange computer.
 - Set the **Port Number**: to the number listed in NetExchange.



Introduction for EDM/LaserLynx or Electronic Measuring Device, (EDM)

The following guide will walk you through the installation, setup and operations of EDM/LaserLynx. If at any point you need additional help, please contact Tech Support: support@finishlynx.com.

Step 1 Installation

NOTE: Step 1 will be completed on the computer/tablet that has a windows-based operation system.

The EDM/LaserLynx plug-in should be installed on a computer/tablet with the latest version of FieldLynx. Locate the EDM/LaserLynx installer (FLLaser #.##.exe) from the Lynx USB drive.

- Right-click on the installer and click **Run as Administrator**.
- Follow the prompts to complete the install.